



# PRESENTATION



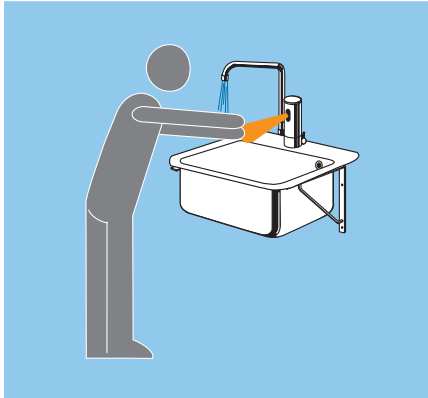
***SanTec***<sup>®</sup> **COOK**  
The convenient kitchen tap



# SanTec® COOK

The convenient kitchen tap

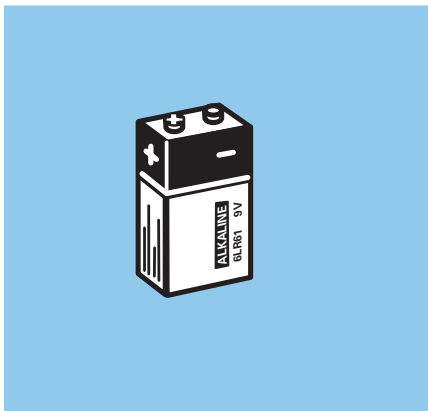
## Product features



**Non-contact hygiene - for abiding the HACCP regulation**



**Especially adapted for kitchen areas and food industry because of special geometry of the outlet**



**Due to 9V battery operation also upgradable at any time (commercially available 9V battery)**



**Variant with flow regulation for a flow rate up to 18l/min.**



# SanTec® COOK

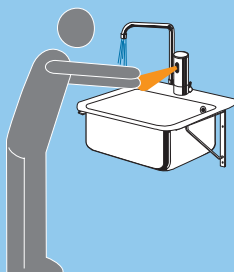
The convenient kitchen tap

## Types and art. no.

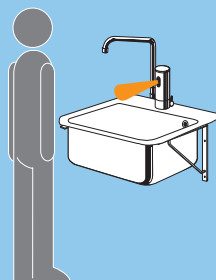


<b>SanTec COOK 9V</b> with mixer, outlet 150 mm	Chromium	art. no. 102 819
<b>SanTec COOK 9V</b> with mixer, outlet 220 mm	Chromium	art. no. 102 826
<b>SanTec COOK 9V</b> with mixer and <b>flow regulation</b> outlet 150 mm	Chromium	art. no. 102 833
<b>SanTec COOK 9V</b> with mixer and <b>flow regulation</b> outlet 150 mm	Chromium	art. no. 102 840

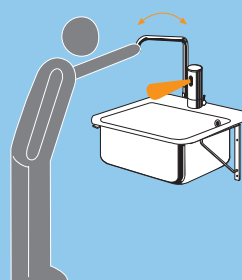
## Function



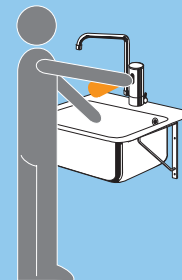
Water flow as long as hands are in active range  
Automatic flushing stop after 1 min.



Hands outside the active range, the water flow stops.



Pivoted outlet  
Pivoting range  $\pm 45^\circ$



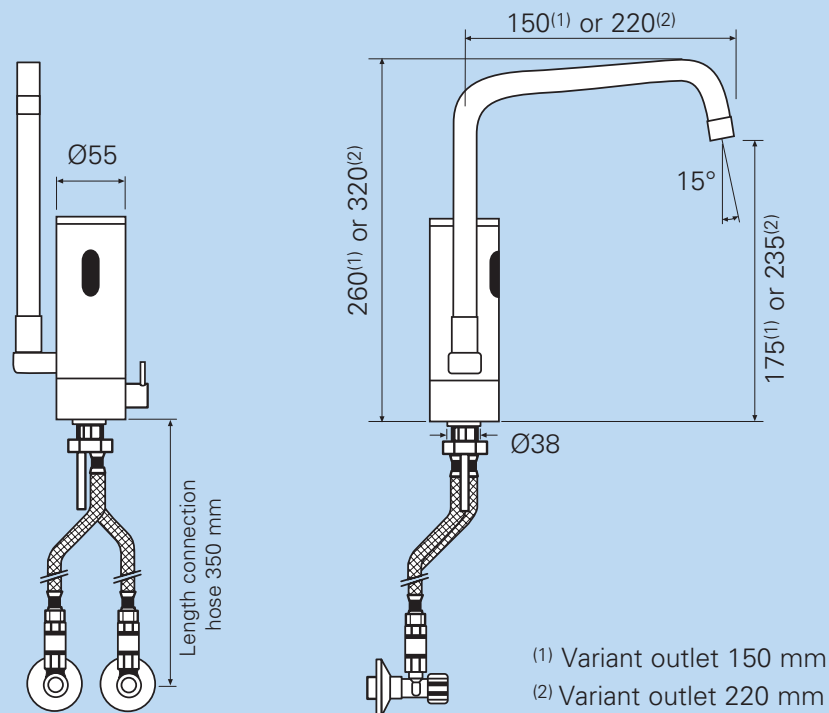
Continuous flow via close range reflex for 60 secs.



# SanTec® COOK

The convenient kitchen tap

## Installation dimensions in mm



## Technical specifications

<b>Battery:</b>	Alkaline 9V
<b>Battery life:</b>	approx. 100.000 uses (approx. 2 years)
<b>Water connection:</b>	G 3/8" inside thread
<b>Active range:</b>	approx. 25 cm preadjusted (15-40 cm adjustable)
<b>Flushing:</b>	as long as user stays in active range
<b>Flushing stop:</b>	after 1 min. (pre-adjusted) 30 sec. - 5 min. adjustable
<b>Continuous flow:</b>	via close range reflex for 60 secs. (30 sec. - 5 min adjustable)
<b>Flow pressure:</b>	0.5 - 6 bar
<b>Static pressure:</b>	max. 8 bar
<b>Flow rate quantity:</b>	9 l/min (at variant with flow regulation 6 - 18l/ min at 3 bar )
<b>Noise class:</b>	I
<b>Water temperature :</b>	max. 70° C
<b>Drilling workplate :</b>	38 mm
<b>Pivoting range:</b>	± 45°



# SanTec® COOK

The convenient kitchen tap

## Installation

1



Fix tap on washbasin

2



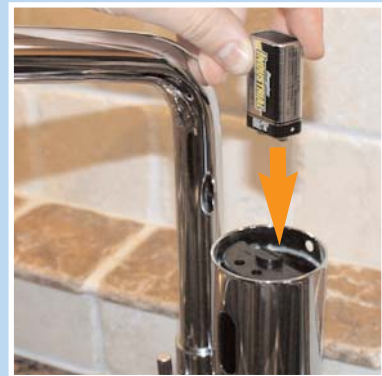
Establish water connection at corner valve.  
Attention! Use reflux preventers

3



If desired adjust active range and maximum  
water flow time (Description see page 9)

4



Remove battery cover and insert 9V battery.  
If desired, change flushing program (page 6 - 7)

5



Shut battery cover and fix on the  
backside with an allen screw.

6



After approx. 10 sec. the tap is  
ready for use.



# SanTec® COOK

The convenient kitchen tap

## Selection of programs



1

### ATTENTION!

**Adjustment of flushing programs only possible in the first 10 sec. after initiation**  
(as soon as battery is inserted)

Program 1 factory-made pre-adjusted.

For changing the flushing program of an already adjusted control, the power supply must be disconnected for at least 60 sec., afterwards a new programming is possible.



2

### Establish a close range reflex by hand

(hold hand 2 cm in front of the sensor window)

Red LED blinks:

- \* **Once = Prog. 1** - without proximity reflex continuous flow resp. deactivation manual with continuous flow
- \*\* **Twice = Prog. 2** - Continuous flow
- \*\*\* **Third = Prog. 3** - Cleaning stop
- \*\*\*\* **Fourth = Prog. 4** - Continuous flow and cleaning stop
- \*\*\*\*\* **Fifth = Prog. 5** - Continuous flow for thermal disinfection, hygiene flush 3h
- \*\*\*\*\* **Sixth = Prog. 6** - Continuous flow for thermal disinfection, hygiene flush 24h



3

Remove hand at the **desired program** (LED flashes x times) - the control confirms the program by flashing twice quickly.

Afterwards there are further 10 sec. for changing the flushing program again. After lapse of this time, the device flashes 3 times quickly and it changes into normal function.

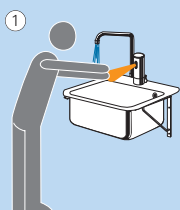


# SanTec® COOK

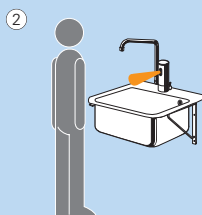
The convenient kitchen tap

## Descriptions of programs

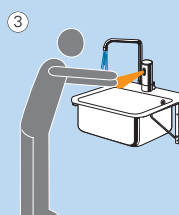
### Program 1



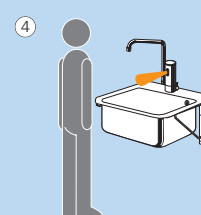
Water flows as long as hands are in active range.



Hands outside the active range water flow stops after 1 sec.



Automatic flushing stop after 1 minute (from 30 sec. - 5 min. adjustable, see page 9)



No continuous flow and cleaning stop

### Program 2 - Continuous flow

- ① as program 1
- ② Water flow stops after 2 secs.
- ③ as program 1
- ④ Continuous flow can be activated via 3 close range reflexes for 60 secs. (pre-adjusted - from 30 sec. - 5 min. adjustable)  
Through 3 anew close range reflexes the continuous flow can be stopped.

### Program 3 - Cleaning stop

- ① as program 1
- ② Water flow stops after 2 secs.
- ③ as program 1
- ④ Cleaning stop can be released by 5 close range reflexes (for 3 min. activated)  
Via 3 anew close range reflexes, the cleaning stop can be deactivated

### Program 4 - Continuous flow and cleaning stop

- ① as program 1
- ② Water flow stops after 2 secs.
- ③ as program 1
- ④ Cleaning stop can be released by 5 close range reflexes (for 3 min. activated)  
Via 3 further close range reflexes (within 10 secs.) the continuous flow can be released for 1 min.(adjustable from 30 sec. - 5 min.)  
Through 3 anew close range reflexes the normal mode of the armature is activated.

### Program 5 - Continuous flow for thermal disinfection, hygiene flush 3h

- ① as program 1
- ② Water flow stops after 2 secs.
- ③ as program 1
- ④ Continuous flow for thermal disinfection can be activated via 5 close range reflexes for 5 min. If an user will be recognised in the far range, the continuous flow will be stopped (scald protection) and the rest mode of the armature is activated for 3 min.  
Through 3 close range reflexes the normal mode is enabled again.  
Furthermore at non-use an hygiene flush takes place every 3 hours for 60 secs. (adjustable from 30 sec. - 5 min.)

### Program 6 - Continuous flow for thermal disinfection, hygiene flush 24h

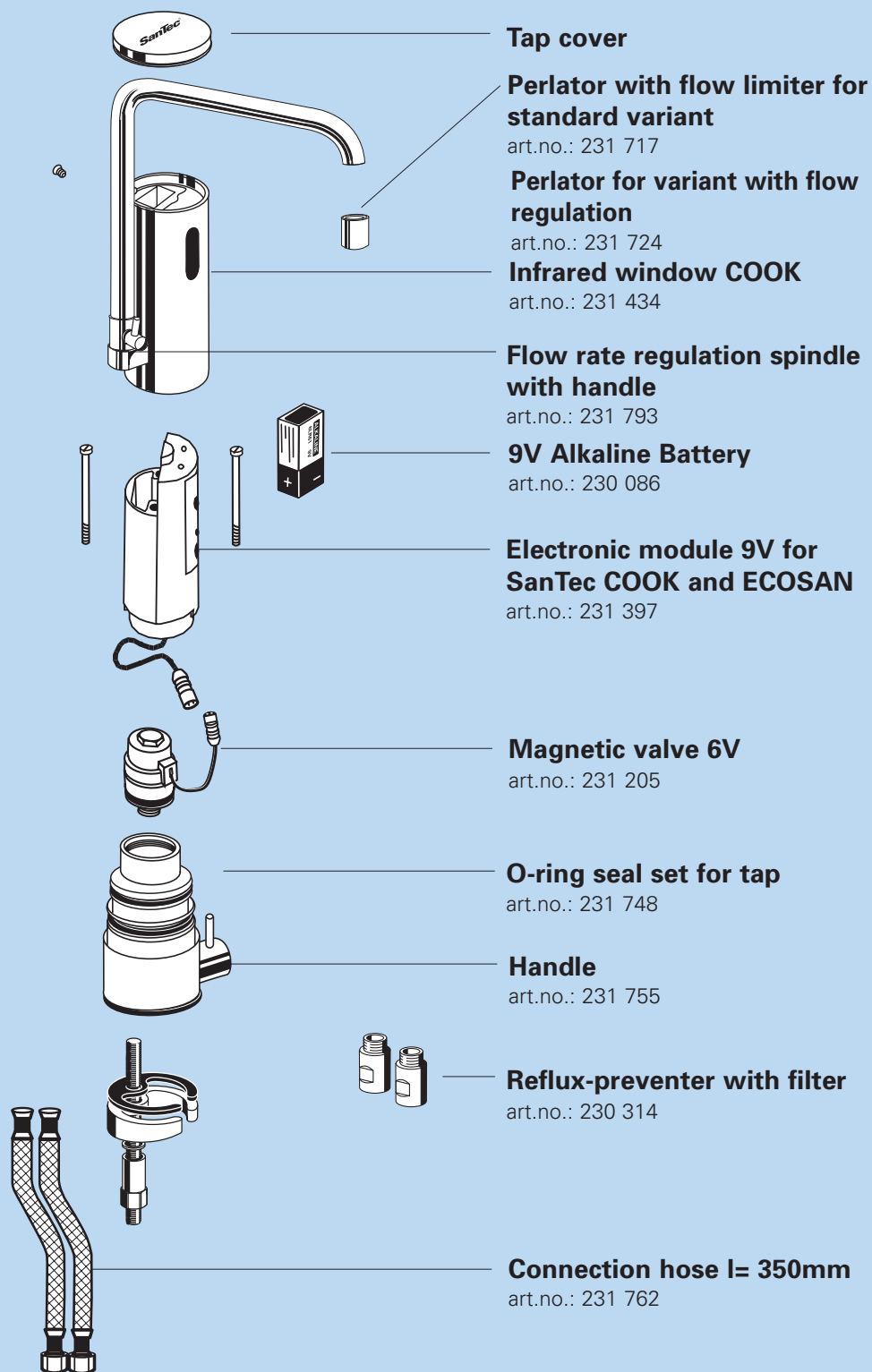
- ① as program 1
- ② Water flow stops after 2 secs.
- ③ as program 1
- ④ Continuous flow for thermal disinfection can be activated via 5 close range reflexes for 5 min. If an user will be recognised in the far range, the continuous flow will be stopped (scald protection) and the rest mode of the armature is activated for 3 min.  
Through 3 close range reflexes the normal mode is enabled again.  
Furthermore at non-use an hygiene flush takes place every 24 hours for 60 secs. (adjustable from 30 sec. - 5 min.)



# SanTec® COOK

The convenient kitchen tap

## Product layout

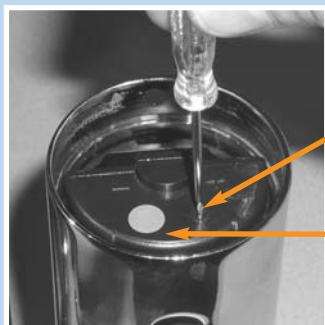




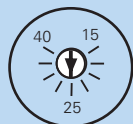
# SanTec® COOK

The convenient kitchen tap

## Device adjustments

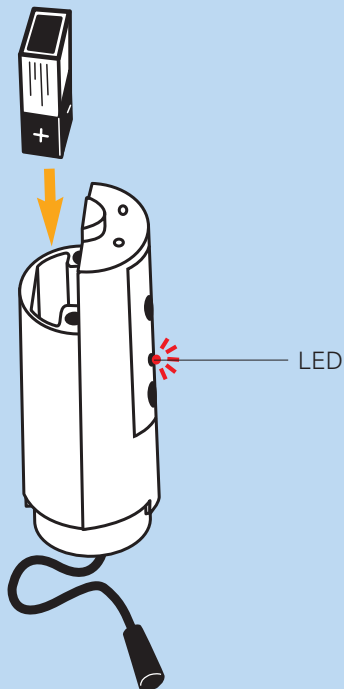


Adjustment of automatic flushing stop and continuous flow time from 30 sec. - 5 min. (1 min. pre-adjusted).



Active range from 15 - 40 cm adjustable (25 cm pre-adjusted).

## Electronic module



### Function 1 (program selection)

Standard program: program 1  
description of programs see page 6 - 7

### Function 2:

LED flashes at 2 sec. intervals when battery must be changed

### Function 3 (at program 2 - 6):

LED flashes at close-range reflex

